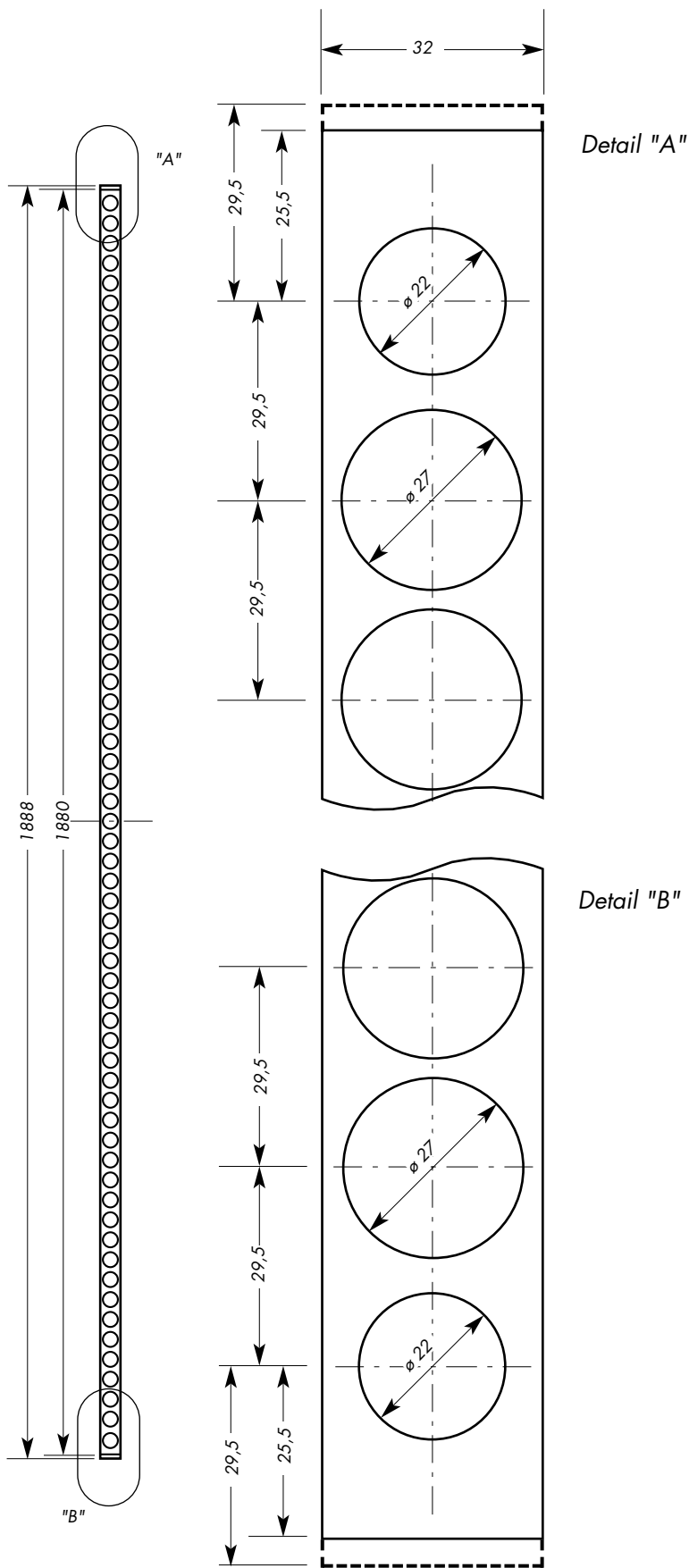


# DTD surová, děrovaná

32 RT<sub>7</sub>x1880 + 32 RT<sub>7</sub>x1888



Röhren Tubes		Dicke Thickness	32	32
Anz. No.	Ø	Typ Type	1880 RT <sub>7</sub>	1888 RT <sub>7</sub>
2	22	kg/m <sup>3</sup> VSP	520	520
61	27	kg/m <sup>3</sup>	212	213
		kg/m <sup>3</sup>	6,8	6,8
		% VSP	40,7	40,9

**32 RT<sub>7</sub> x 1880 mm**  
**32 RT<sub>7</sub> x 1888 mm**

Zeichnung  
Drawing **T7 1880**

Maßstab/ Scale 1:10 Detail 1:1